

Manage all stations in the network via RCCMD



- Shutdown
- Messaging

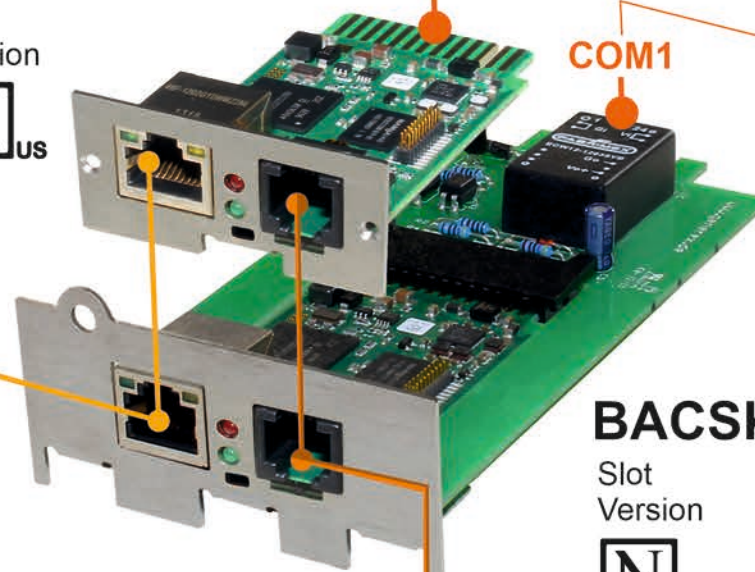
Network Connectivity

- Web Based Configuration Interface
- 10Mbit-100Mbit-1Gbit Networks
- Remote Scripting
- RCCMD Network Messaging
- SNMP V2, V3
- SNMP RFC1628 Network Interface
- Email / EmailTrap
- MODBUS over IP
- BACnet over IP
- Build in SFTP Functions
- Event-, Data and Environmental Log
- RSyslog
- RADIUS
- Network Diagnostic Tools

BACSK4MINI-6

Slot Version

LAN



BACSK4R2-6

Slot Version

COM2 - COM3 Combi Port

Depending on connected devices: Adapter and/or splitter required



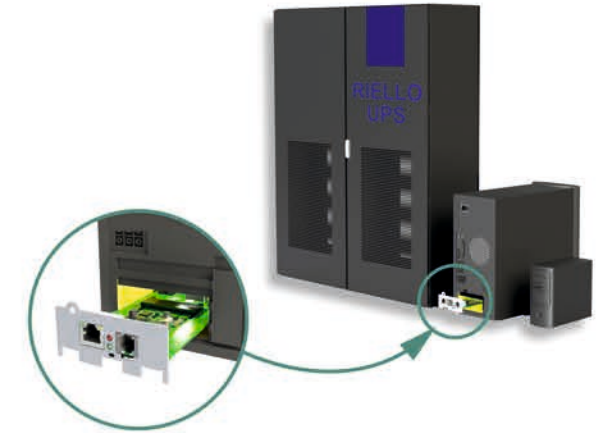
Facility Management Extension Options

- Pipe-Through RS-232
- MODBUS RS232
- SENSORMANAGER „SENSMC121“ *
- Temperature Sensor „SM_T_COM“ *
- Temperature and Humidity Combi Sensor „SM_T_H_COM“ *
- PROFIBUS „BACS_SPI_II“ *
- PROFINET „BACS_PROF“ *
- GSM / LTE / 4G Modem „4G-T61“ *

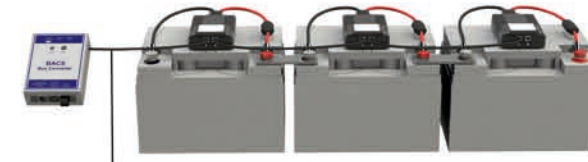
* = Required: „Kabel135“ cable

Compatible with different UPS Products, STS/ATS and Power Generators

AROS/RIELLO UPS with NETMAN Slot



BACS - Battery Management System



- BACS BUS Interface „GX_R_AUX“
- BACS Modules „BACSCxx“
- BACS Current Sensors „BACS_CSHxxx“, „BACS_CSHxxxF“, BACS_CSHxxxFx“