

BACSKM4-6

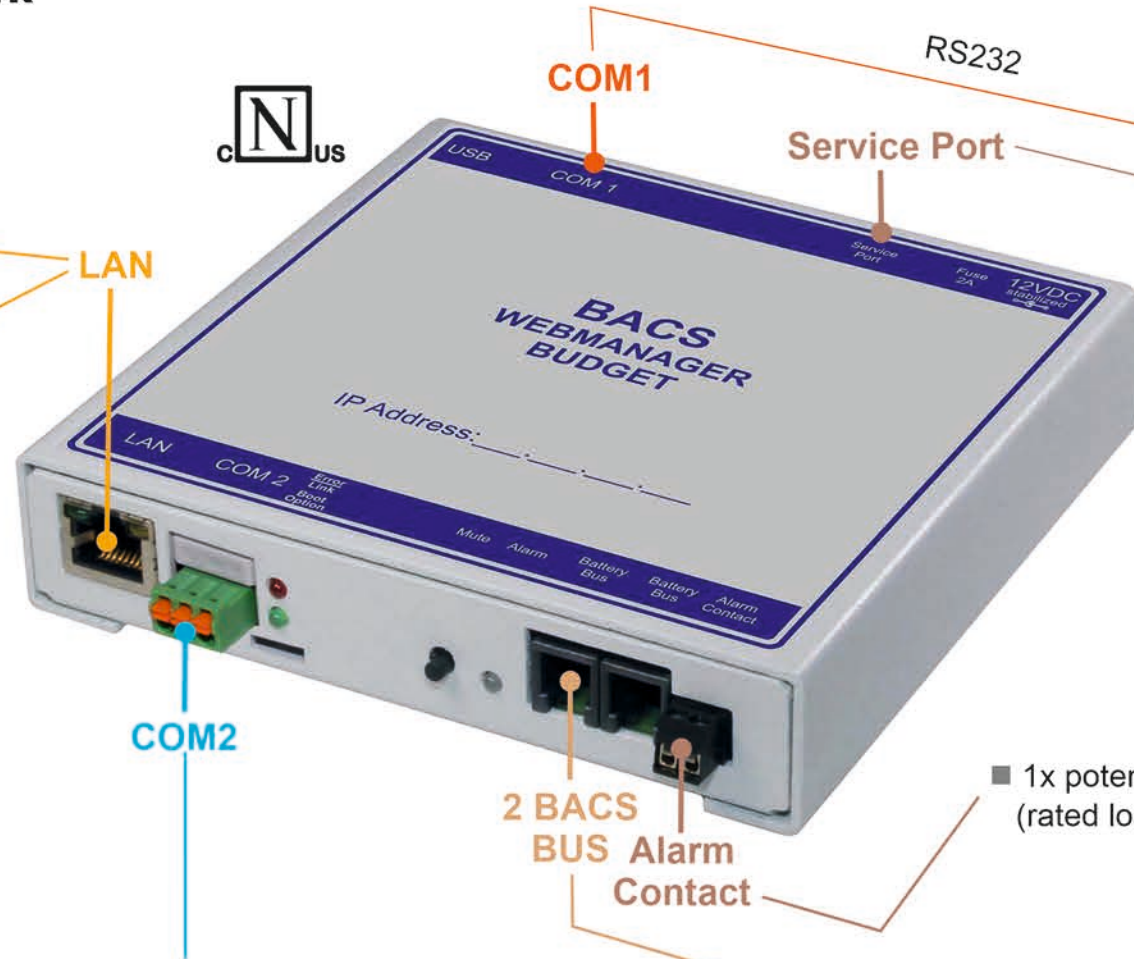
Manage all stations in the network via RCCMD



- Shutdown
- Messaging

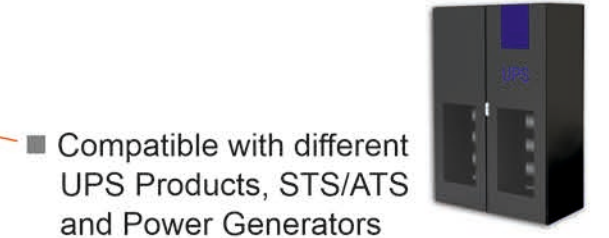
Network Connectivity

- Web Based Configuration Interface
- 10Mbit-100Mbit-1Gbit Networks
- Remote Scripting
- RCCMD Network Messaging
- SNMP V2, V3
- SNMP RFC1628 Network Interface
- Email / EmailTrap
- MODBUS over IP
- BACnet over IP
- Build in SFTP Functions
- Event-, Data and Environmental Log
- RSyslog
- RADIUS
- Network Diagnostic Tools



Options MODBUS for Facility Management

- MODBUS RS485
 - Indicating Instruments
 - UPS with RS485 Interface
- Compatible with different UPS Products, STS/ATS and Power Generators

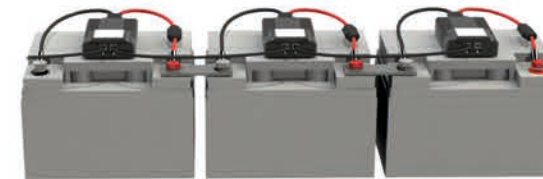


- Compatible with different UPS Products, STS/ATS and Power Generators
 - SENSORMANAGER „SENSMC121“ *
 - Temperature Sensor „SM_T_COM“ *
 - Temperature and Humidity Combi Sensor „SM_T_H_COM“ *
- * = Required: „KABSMTDB9“ cable

Connection with WINDOWS

- BACS PROGRAMMER
- BACS READER

BACS - Battery Management System



- BACS BUS Interface „GX_R_AUX“
- BACS Modules „BACSCxx“
- BACS Current Sensors „BACS_CSHxxx“, „BACS_CSHxxxF“, BACS_CSHxxxFx“

■ 1x potential-free contact (rated load 24 VDC/1A)

2 BACS BUS Alarm Contact